

Design Considerations

Converting Existing Car Spaces

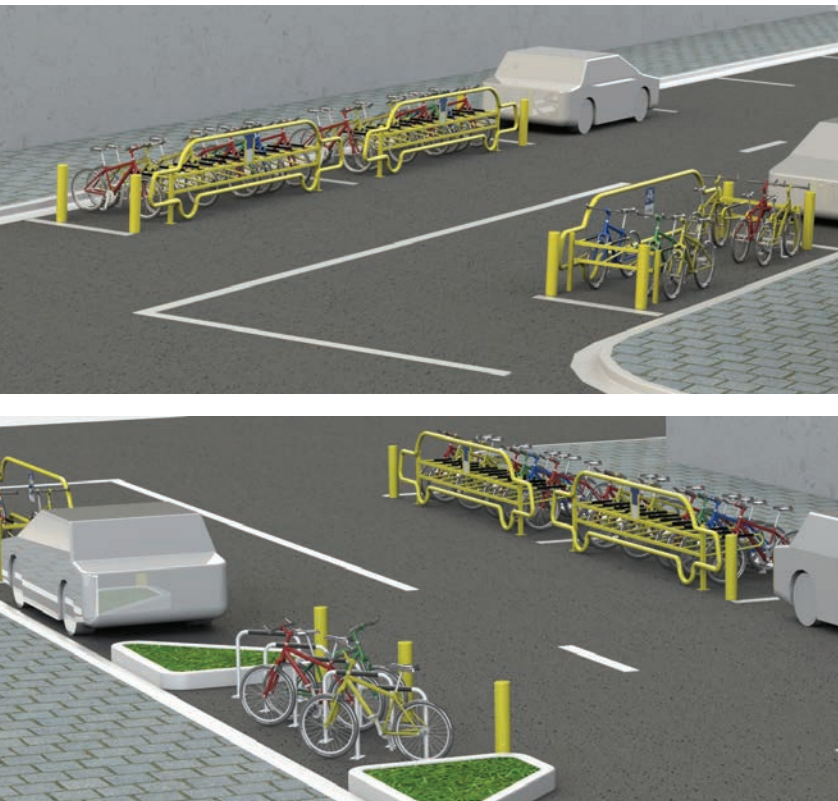
The question is often asked ‘what is the simplest way to increase bike parking?’... The obvious answer is ‘convert car parking spaces’. As a rule of thumb each car space will provide parking for 8-12 cyclists.

It is possible to convert car spaces in either internal car parks or external locations and even street parking by using one or more of Securabike’s array of products.

Street Parking

Bike corrals are becoming increasingly popular method of converting street car spaces to bike parking. It is important however to install physical protection such as bollards or concrete kerbs to prevent motor vehicles encroaching into bicycle parking areas.

Examples of bike corrals in street locations.



These diagrams should also serve as a guide for making economical use of the existing car spaces to provide additional bicycle parking.

The diagrams, using modules of a standard car space (2.4m x 5.4m) and typical Securabike rails and racks show economical usage of space for both secure parking and accessibility.

One Car Space Conversion

