



BIKE LOCKERS



Fully enclosed galvanised steel lockers provide the highest level of security (Class 1) to AS2890.3. While they are the most popular secure parking for cyclists, they are the most expensive bike parking option.

Securabike's BSL and BVLH lockers are in wide use in various state and metropolitan rail networks, making them a widely-specified and used locker.

Securabike bicycle lockers are available in both horizontal and vertical models and are manufactured from 1.6mm galvanised sheeting for maximum durability and corrosive resistance (BSL18S and BSL18D). They can also be powder coated in a range of colours at an extra cost. Some models are now available in stainless steel (grade 316) to cater for locations near the seafront where corrosion is a concern.

Horizontal lockers have been designed as a demountable unit and are supplied either as a flat pack or pre-assembled. Flat packs offer substantial freight savings, particularly if being

transported to regional or interstate locations. They are supplied in single or the more popular and cost-effective double locker.

Vertical lockers can be manufactured demountable or flatpack in 2, 3 or 4 locker modules which are constructed around a steel frame providing robust, high vandal-resistant security.

Advantages

- Provide the highest level of security – Class 1
- Modular system tailored to suit application
- Single, double or vertical configuration
- Protects bicycle from weather
- Bicycle is hidden from view
- Surveillance not normally required
- Best suited for long term parking
- Individual locking with master keying system

Applications

- Railway stations and bus interchanges
- Park and ride terminals
- Workplaces
- University and college campuses
- Apartments

Lockers

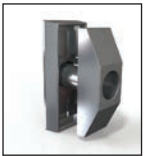
Securabike Economy Range is supplied with standard hasp and staple that allows cyclists to use their own U lock or padlock. All other models come with three point locking system with T handle as standard. Securabike lockers can be integrated with Electronic Locking System at an additional cost. Please contact sales for more information.

Recommended options



HSL

Hasp and staple – allows the cyclist to use their own U locks or padlock



VRTH

Vandal-resistant T handle – spring-loaded handle locates flush when not being used, to minimise vandalism



MKL

Master keying – recommended for multiple locker installations to provide improved locker management and security



MHH

Metal hanging hooks – for helmets and apparel



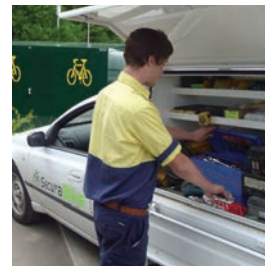
LVPI

Ventilation panels – provides air movement and also allows inspection to ensure lockers are in use, and being used correctly

Electronic Locking System



Securabike has developed an electronic locking system for its range of lockers, cages and compounds. The system is designed to provide greater utilisation of the lockers while increasing security and minimising management costs.



Management Plan

Securabike's many years' experience in supplying and maintaining bicycle lockers has highlighted the need to develop a management plan to ensure the best possible utilisation of the lockers, what security should be provided and what the cyclist needs to provide. Additionally, Securabike can advise on what service and maintenance needs are required to maximise the life expectancy of the lockers.

Finish

Lockers are supplied standard in a galvanised steel finish. Powder coating, in a range of colours, is available at extra cost.

Product Range

1300 780 450

Introduction	1
Bicycle Facts	4
Design Guide	6
Product Selection	7
Consulting	12
Installation	13
Security Classes	14
PRODUCT RANGE	
Rails	15
Racks	23
Repair Stations	46
End-of-Journey	50
Cages	64
Lockers	68
Shelters	74
Scooters Racks	78
Other Products	80
AS2890.3 Overview	82
Packaging	85
Index	86

Lockers

TBL18S

Economy Range

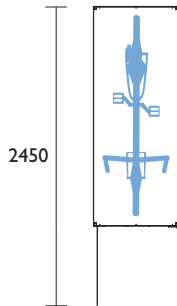
Comes with hasp and staple as standard lock.
Range of other locks available at an additional cost. Please contact sales.

Securabike's most cost effective bicycle locker. This design is supplied in knock down kit form. It uses a tubular steel frame that clips together. The door and cladding are then attached by pop rivets. Quick and easy to assemble and install.



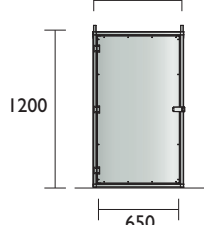
Galvanised sheet cladding

TBL18S
Plan View



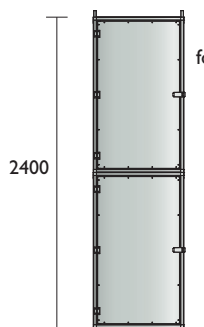
PLEASE NOTE:
This product comes in galvanised finish as standard. However, it can be powder coated in a range of colours at an additional cost to suit requirements.

Front View
700



Clear Door Opening

Front View
Stackable



Hasp and staple for cyclists to provide their own padlock.



Optional (TBL RAMP) wheel ramp
Optional stencil signage

SUITABLE FOR STACKING TWO HIGH

Material Specifications (General)

TBL18S	25 x 25mm RHS steel frame
	0.8mm galvanised metal sheet
Finish	Galvanised



Lockers

BVLH1 Vertical Locker

Comes with three point locking system with T handle as standard. Range of other locks available at an additional cost upon request.

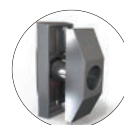
This vertical bicycle locker features the smallest footprint of all bicycle lockers and is best suited for sites requiring the highest degree of storage density. The bicycle is suspended on an internal wheel hook with two additional hooks that can be used for helmets or clothing.

A sturdy internal frame with galvanised sheeting is further strengthened through the use of steel corner brackets.



Creased roof panel to provide strength and fall for water run-off (stiffener channel under roof panel)

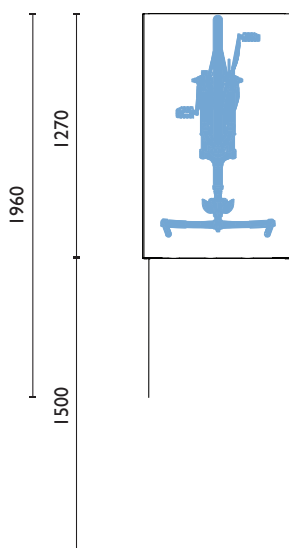
Optional stencil signage



T handle provides improved vandal resistance and allows master keying

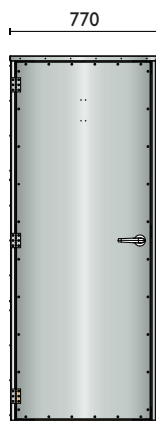
Three point secure locking

Plan View



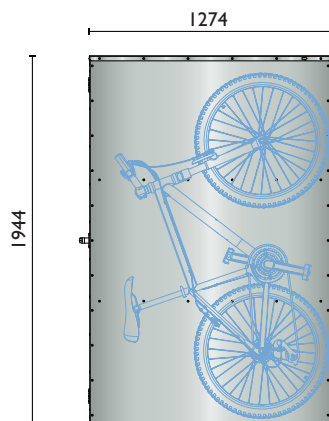
PLEASE NOTE: This product comes in galvanised finish as standard. However, it can be powder coated in a range of colours at an additional cost to suit requirements.

Front View



690 Clear Door Opening

Side View



Material Specifications (General)

Material	0.8mm metal sheet
Inclusions	Reinforced door & roof stiffeners, wheel rail Clothes / helmet hooks, 3-way locking
Finish	Galvanised



Lockers

BSL18S

Horizontal

Comes with three point locking system with T handle as standard.
Range of other locks available at an additional cost upon request.

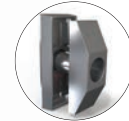
Single locker with horizontal storage
Ideal where only single-sided access is available

Creased roof panel to provide strength and fall for water run-off (stiffener channel underneath)

PLEASE NOTE:
This product comes in galvanised finish as standard. However, it can be powder coated in a range of colours at an additional cost to suit requirements.



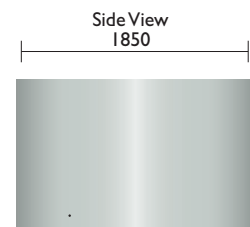
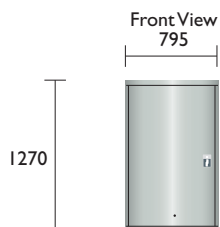
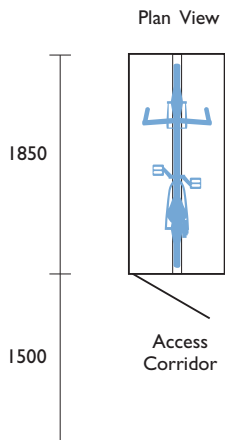
Optional stencil signage



T handle provides improved vandal resistance and allows master keying

Three point secure locking

10mm hole for scope camera



Material Specifications (General)

Material 1.6mm Galvabond® sheet
Inclusions Reinforced door & roof stiffeners, wheel rail, pull-out channel on 2 storey lockers. Clothes / helmet hooks, 3-way locking, security camera access
Finish Galvanised



Lockers

BSL18D
Horizontal

Comes with three point locking system with T handle as standard.
Range of other locks available at an additional cost upon request.

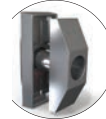
Double locker with horizontal storage

BSL18D
Galvabond®
SBSL18D
Stainless Steel

Optional ventilation panel

Creased roof panel to provide strength and fall for water run-off (stiffener channel underneath)

Optional stencil signage



T handle provides improved vandal resistance and allows master keying

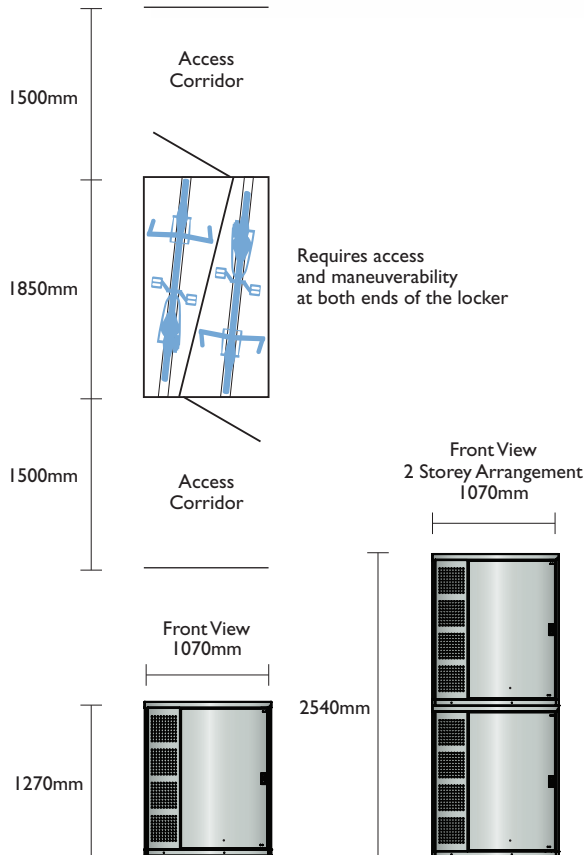
Three point secure locking

10mm hole for scope camera

PLEASE NOTE:
This product comes in galvanised finish as standard. However, it can be powder coated in a range of colours at an additional cost to suit requirements.

MOST POPULAR MODEL

Plan View



Suitable for stacking two high



Optional (TBL ramp) wheel ramp or Securabike's unique gas strut power assist system.

Material Specifications (General)

Material 1.6mm Galvabond® sheet
Inclusions Reinforced door & roof stiffeners, clothes / helmet hooks, 3-way locking, security camera access
Finish Galvansied steel

